



SECOND CIRCULAR

XVII RAS ARGENTINE MEETING OF SEDIMENTOLOGY

Sedimentology, energy and environment
Exploring new scenarios



June 8 to 11,
2020



Paraná
Provincial Convention
Center (CPC)



Universidad Autónoma
de Entre Ríos



ASOCIACIÓN ARGENTINA
DE SEDIMENTOLOGÍA

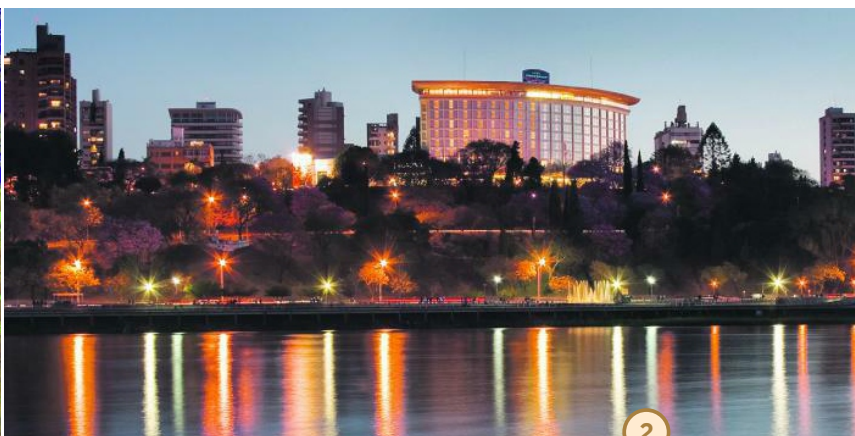
PRESENTATION

The main aim of the XVII RAS Meeting is to present the scientific advances in the fields of Sedimentology and Stratigraphy applied to the analysis of sedimentary basins. This edition will take place, for the first time, in Argentina's northeast region (Argentine Mesopotamia, Chaco and Northern Pampa). The geographical location of this event venue placed on the left bank of Paraná River, one of the largest anabranching fluvial systems of the world, constitutes an excellent access to the river and its geological exposures. This fluvial system represents one of the best laboratories for the study of sedimentary processes, considering its importance as an analogue for the analysis of the fluvial sedimentary record.

The XVII RAS Meeting is co-organized by the Argentine Association of Sedimentology (AAS) and the Entre Ríos Autonomous University (UADER), and sponsored by academic institutions and research centres of Santa Fe and Entre Ríos provinces together with CONICET, YPF and IAS. Under de motto "Sedimentology, energy and environment: exploring new scenarios" scientific, technical and economic discussions will be encouraged throughout the event, especially focussing on Sedimentology and its applications as strategic tools for social and economic development.

We face the challenge of addressing current or potential social problems, and the needs of both private and public institutions, by integrating the knowledge acquired through new lines of research and by promoting the engagement of graduate and post-graduate students. We as well expect to strengthen the cooperation among interdisciplinary working groups, in order to boost the production of new and more complex scientific knowledge in the region. Plains contain important geological resources and vast amounts of geoscientific and environmental information. Therefore, we see with great pleasure this opportunity of exploring the sedimentological aspects of these extensive regions where the main socio-productive activities of the Argentina are held. Environmental hazards in plains and conventional and novel sources of energy, are topics increasingly frequent on the country's agenda.

We hope this event will captivate the interest of professionals and scientists active in different fields of Sedimentology and that they can participate and present their results in the XVII RAS, given the relevance of their presence in order to contribute to the advance of theoretical and applied research.



DATES AND DEADLINES

- Registration Opens: **January 10th 2020**
- Abstract Submission Opens: **January 10th 2020**
- Welcome Reception: **June 8th 2020**
- Conference Dinner: **June 9th 2020**
- Post-Congress Field Trips: **June 11th 2020**
- Post-Congress Courses: **since June 12th 2020**

IMPORTANT DATES

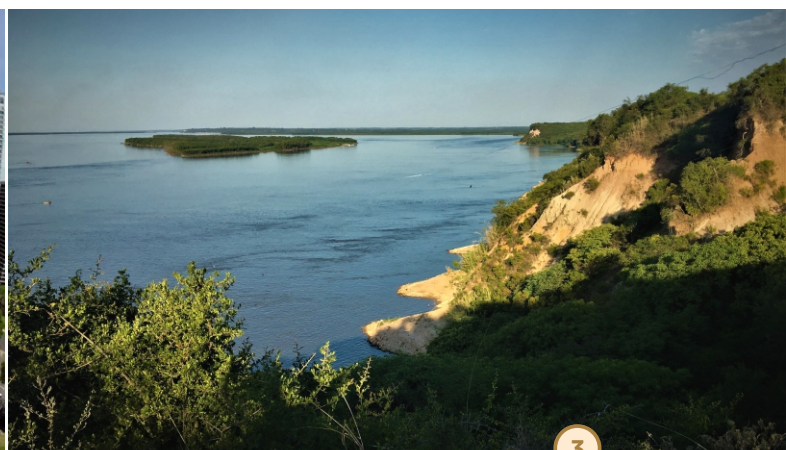
- Abstract Submission Deadline: **February 20th 2020**
- Early Registration Deadline (early bird fee): **March 5th 2020**
- IAS Travel Grant Application Deadline (www.sedimentologists.org): **March 10th 2020.**
- Late Registration Deadline: **April 20th 2020**
- Abstract Acceptance Deadline: **April 30th de 2020**
- Sending Third Circular, including the Sessions Program: **May 8th 2020**
- Inscription Deadline of Post-congress Field Trips: **May 20th 2020**

EVENT VENUE

The XVII RAS Meeting will be held in the halls of the recently inaugurated Provincial Convention Centre (CPC) of Paraná City, located in the Urquiza Park, with an excellent Paraná River view next to commercial and civic centres.

Website of the Provincial Convention Centre (CPC):

www.centrodeconvenciones.com.ar



ORGANIZING COMMITTEE

The organizing committee is composed of researches, fellows and technicians from the National Scientific and Technical Research Council of Argentina (CONICET) and different universities (UADER-UNL-UNC).

Chair

Dr. Ernesto Brunetto (*CICyTTP-CONICET-UADER*)

Vice-chair

Dra. Daniela Kröhling (*CONICET - UNL*)

Secretary

Lic. Javier Soffiantini (*CICyTTP-CONICET - UADER*)

Treasurer

CPN Gabriel Ríos (*UADER*)

Pamela Uhrig (*UADER-CICyTTP*)

Vocals

Dra. Brenda Ferrero (*CICyTTP-CONICET - UADER*)

Geól. Belén Thalmeier (*CONICET - UADER*)

Lic. Oscar Pedersen (*CICyTTP-CONICET - UADER*)

Dra. Jimena Roldán (*CONICET - UNL*)

Lic. Verónica Duran (*UNL*)

Collaborators

MSc. Franco Sobrero (*UNL*)

Lic. Francisco Cianfagna (*CONICET*)

Est. Ing. Rec. Hid. Daniela Sánchez (*UNL*)

Dra. Noelia Nuñez Otaño (*UADER-CONICET*)

Lic. Vanesa Cuello (*UADER*)

Lic. Nadia Bilat (*UADER*)

CPN Julian Haiek (*UADER*)

Est. Geol. Candela Costa (*UNC*)

Técn. M. Griselda Gottardi (*CICyTTP-CONICET*)

Students of Biology and Tourism (*UADER*)



SOCIAL PROGRAMME

Welcome Reception

A welcome reception will take place at the end of the afternoon of the first day (June 8th 2020) at the Centro Provincial Convention Centre (CPC).

Conference Dinner

A conference dinner will be offered on the second day of the event (June 9th 2020). This will take place close to the CPC. The cost of the dinner will be announced in the Third Circular.

Companion Program

Paraná Tourism Secretary (www.paranaturismo.com.ar) presents a complete tourist proposal to know and enjoy the urban centre and the river. Tourism Technician's students of the UADER will be available during the event at the CPC to provide related information.

SCIENTIFIC PROGRAMME

The meeting will be organized in **Plenary Conferences (PC)**, **General Sessions (GS)** and **Thematic Sessions (TS)**. Simultaneously, there will be **special guest lecturers, round tables and workshops** dealing with relevant topics for the development of countries and Earth Sciences.

Scientific Programme Coordinator: D. Kröhling.

Plenary Conferences (PC)

Conferences will be preceded by outstanding researchers with extensive academic and professional careers and international expertise in different fields of sedimentology:

PhD. John Holbrook (Texas Christian University, Fort Worth, USA)

PhD. André Sawakuchi (University of Sao Paulo, Sao Paulo, Brazil)

PhD. Ricardo Astini (CONICET-UNC, Córdoba, Argentina)

PhD. Juan Pablo Milana (CONICET-UNSJ, San Juan, Argentina)

PhD. Diego Kietzmann (UBA, Buenos Aires, Argentina)

PhD. Martín Iriondo (Córdoba, Argentina)

PhD. Marcelo H. García (University of Illinois, Urbana, USA)



General Sessions (GS) and Thematic Sessions (TS) (preliminary)

A. DEPOSITIONAL SYSTEMS IN CONTINENTAL ENVIRONMENTS (GS)

- A1. Lacustrine and paludal records, their application to the paleoenvironmental reconstruction (TS)
- A2. Sedimentary processes, architecture analysis, stratigraphy of fluvial and alluvial systems (TS)
- A3. Aeolian processes and sedimentary record (TS)
- A4. Glacial sedimentary record (TS)
- A5. Palaeosols and its significance in sedimentary processes analysis (TS)

B. DEPOSITIONAL SYSTEMS IN MARINE ENVIRONMENTS (GS)

- B1. Cenozoic platforms (TS)
- B2. Sedimentation in shallow marine environments (TS)
- B3. Depositional processes in deep marine environments, facies and stratigraphy (TS)

C. DEPOSITIONAL SYSTEMS IN TRANSITIONAL ENVIRONMENTS (GS)

- C1. Morphodynamics and stratigraphy in estuarine systems (TS)
- C2. Littoral sediments and dynamics (TS)
- C3. Deltas (TS)
- C4. Critical transition zones in sedimentary systems: stratigraphy and paleogeographical record (TS)

D. SEDIMENTARY PROCESSES ANALYSIS (GS)

- D1. Mechanical sedimentary processes (TS)
- D2. Bio-sedimentary processes (TS)
- D3. Geochemical sedimentary processes (TS)
- D4. Volcaniclastic processes, volcaniclastic and pyroclastic sedimentary record and model facies. Influence on the environment (TS)
- D5. Extreme events and sedimentation: volcanic, seismic, tsunamis, mega-landslides, liquefaction and gravitational flows, floods and extreme storms, extra-terrestrial impacts (TS)
- D6. Processes linked to particle generation, mobilization in sedimentary basins, provenance and sediment balance analysis (TS)

E. PETROLOGY, GEOCHEMISTRY AND DIAGENESIS OF CLASTIC AND CARBONATIC ROCKS (GS)

F. GEOCHEMISTRY OF SEDIMENTS (GS)

G. SEDIMENTARY BASIN ANALYSIS: ADVANCES IN STRATIGRAPHY, ARCHITECTURE AND MODELLING OF CLASTIC DEPOSITS (GS)

- G1. Morphology, architecture, flow processes and sedimentation, relationships between depositional processes, facies and stratigraphy (TS)
- G2. Cyclicity in the sedimentary record (TS)
- G3. Sequence Stratigraphy in seismic sections and outcrops (TS)
- G4. Paleoclimate and sedimentation (TS)
- G5. From remoting sensors and database in situ to numerical modelling and terrestrial analogues (TS)
- G6. New approaches in the depositional architecture of basins: from seismic stratigraphy to analogical models (TS)

H. TECTONICS, NEOTECTONICS AND SEDIMENTATION (GS)

H1. Depositional architecture analysis in deformational settings: from seismic stratigraphy to analogical models (TS)

H2. Controls on clastic sedimentation in orogenic settings (TS)

I. ICNOLOGY, PALAEOBOTANICS, PALINOLOGY AND PALAEOECOLOGY: APPLICATION IN DEPOSITIONAL ENVIRONMENT ANALYSES (GS)

J. STRATIGRAPHY AND SEDIMENTARY CONTROLS IN THE PALEONTOLOGICAL AND ARCHEOLOGICAL RECORD (GS)

K. SEDIMENTOLOGY AND HYDROCARBONS (GS)

K1. Sedimentology at a reservoir scale (TS)

K2. Sedimentology and properties of reservoirs in siliciclastic and carbonate deposits (TS)

L. APPLIED SEDIMENTOLOGY (GS)

L1. Applied sedimentology in natural resource assessment for exploitation (hydric, hydrogeological and mining resources) (TS).

L2. Management of sediments in coastal and fluvial environments (TS)

L3. Analysis of the anthropogenic impact on deflation, soil erosion processes and sediment transfer (TS)

Workshops and special sessions (preliminary):

T.1. SEDIMENTOLOGY TEACHING

T.2. ROLE OF THE SEDIMENTOLOGY IN CLIMATE CHANGE RESEARCH

T.3. STUDY METHODS AND APPROACHES IN SEDIMENTOLOGY

T.4. MINERALOGY AND GEOCHEMISTRY OF CLAY MINERALS

T. 5. SEDIMENTOLOGY IN A LARGE FLUVIAL SYSTEM: THE PARANÁ RIVER

T.6. UNCONVENTIONAL HYDROCARBON RESERVOIRS

T.7. LITHIUM IN SALINE LAKES

T.8. SEDIMENTOLOGY AND RENEWABLE ENERGIES

Courses

Proposals for post-meeting short courses are very welcome. They will be devoted to exploring different sedimentological and related topics focus on current and emerging issues. The reception of proposals is open.



Scientific Committee

- **Marina L. Aguirre** (CONICET-UNLP)
- **Mario Amsler** (INALI-CONICET-UNL)
- **Daniel Ariztegui** (University of Geneva, Suiza)
- **Marcelo Arnosio** (UNSa)
- **Ricardo Astini** (CICTERRA-CONICET-UNC)
- **Elisa Beilinson** (CIG-CONICET-UNLP)
- **Eduardo S. Bellosi** (CONICET-MACN)
- **Pablo Bouza** (CENPAT-CONICET)
- **Mariana Brea** (CICyTTTP-CONICET-UADER)
- **Ernesto Brunetto** (CICyTTTP-CONICET-UADER)
- **Alberto T. Caselli** (CONICET-UNRN)
- **Gilda Collo** (CICTERRA-CONICET-UNC)
- **Francisco Córdoba** (CONICET-UNJU)
- **Carlos H. Costa** (UNSL)
- **Cecilia E. Del Papa** (CICTERRA-CONICET)
- **Mercedes Di Pasquo** (CICyTTTP-CONICET)
- **Margarita Do Campo** (INGEIS-CONICET-UBA)
- **Carlos A. Echevarría** (Pampa Energía)
- **Nicolás Foix** (CONICET, UNPSJB)
- **Diego Gaiero** (CICTERRA-CONICET-UNC)
- **Sergio M. Georgieff** (CONICET-UNT)
- **Eduardo A. Gómez** (IADO-CONICET-UNS)
- **Federico I Isla** (CONICET-UNMDP)
- **Diego Kietzmann** (CONICET-UBA)
- **Javier M. Krause** (CONICET-MEF-UNPSJB)
- **Daniela Kröhling** (CONICET- UNL)
- **M. Gabriela Mangano** (University of Saskatchewan, Canada)
- **Mateo Martini** (CICTERRA-CONICET-UNC)
- **Sergio Matheos** (YTEC-CONICET-UNLP)
- **Ricardo N. Melchor** (CONICET-UNLPam)
- **Stella M. Moreiras** (IANIGLA-CONICET-UNCu)
- **Oscar Orfeo** (CECOAL-CONICET-UNNE)
- **Juan P. Milana** (CONICET-UNSJ)
- **Andrea Pasquini** (CICTERRA-CONICET-UNC)
- **Gerardo M. Perillo** (IADO-CONICET-UNS)
- **Laura Perucca** (CONICET-UNSJ)
- **Ivan A. Petrinovic** (CICTERRA-CONICET-UNC)
- **Mercedes Pramparo** (IANIGLA-CONICET)
- **María Sol Raingemborn** (CIG-CONICET-UNLP)
- **Sebastián Richiano** (CENPAT-CONICET)
- **Jimena Roldan** (CONICET-UNL)
- **Ernesto Schwarz** (CIG-CONICET-UNLP)
- **Ricardo N. Szupiany** (CONICET-UNL)
- **Rita Tófalo** (UBA)
- **Augusto N. Varela** (YTEC-CONICET-UNLP)
- **Gonzalo D. Veiga** (CIG-CONICET-UNLP)
- **Gustavo D. Vergani** (Pluspetrol)

SUBMISSION

The contributions can be oral or poster presentations. Each oral presentation will last 15 to 20 minutes, included a time for questions and brief discussions. The precise time of presentation will be informed in the Third Circular.

All session rooms of the Convention Centre are provided with computers, digital projectors configured for MS PowerPoint format (.ppt, .pptx), microphones and laser pointers.

A hall of the Convention Centre will be used for the poster presentations. Those will take place each afternoon after the oral sessions. Guidelines for its presentations will be communicated in the Third Circular.

Guidelines for the submission of abstracts

Abstracts should correspond to original and unpublished researches. The authors must select the Thematic Session and the type of presentation (oral or poster) that they prefer. The Organizing Committee has the authority to accept or reject that selection, the decision will be communicated to the authors. Two presentations (oral or poster) per author will be accepted, as author or co-author. For each abstract accepted by the Scientific Committee **at least one author should be registered at the meeting before April 30th 2020.**

The abstracts should be limited to 1 page in A4 format; 2 cm indentation on both sides; Word (.doc o .docx) format. The title should be full capital letters (Times New Roman 12), in bold and centred in the page. Author's names should be full capital letters (Times New Roman 12), centred in the next line, in bold and separated by commas. Filiations should be centred in the next line, in italics, without line spacing (Times New Roman 9). The text must be written at 1 line spacing, one column, without indentation (tab key or spaces) and Times New Roman 11 style. The authors may include a selection of the most relevant bibliography (Times New Roman 9). The references must follow the LAJSBA journal format: www.ppct.caicyt.gov.ar/index.php/lajsba/about/submissions. Figures and Tables are not allowed in the abstracts. The abstract must include the results and conclusions of the research. It can be written in Spanish or English languages.

The contributions will be included in the digital meeting book of abstracts once they have been accepted by the Scientific Committee. The contributions that do not follow the guidelines will not be revised.

Abstracts must be submitted in electronic format to xviiras2020@gmail.com

Please, label the file with the first author's last name followed by "et al", where applicable. Add correlative numbering on the file label in case of submitting two abstracts. Eg. "Rodriguez et al_1"; "Rodriguez et al_2"

Abstract Submission Deadline: February 20th 2020

The Meeting Programme will be available before May 22th 2020. The digital version of the Meeting Programme and the book of abstracts will be compiled in PDF format and delivered at the event.

REGISTRATION

Those who want to submit an abstract and/or to assist to the event must be paid registrants. The registration includes the access to the plenary sessions, technical sessions and round tables, icebreaker, coffee breaks and the RAS kit. The registrations will begin February 1st 2020 through bank deposits or wire transference at the AAS Official Bank Account:

ASOCIACIÓN ARGENTINA DE SEDIMENTOLOGÍA
Cuenta Corriente Banco Santander Río # 099-2190/6
CBU: 0720099120000000219068
CUIT: 30-68485339-9

Once the payment is done **you should send, through email, the bill payment** to the Congress Secretary (xviiiras2020@gmail.com), AAS Treasury (tesoreria.aas1@gmail.com) and AAS Secretary (secretariaaas@gmail.com). The attached file should be titled with the last name of the person who complete the registration. The accreditations are going to be every day. The registration costs to the courses will be send in the Third Circular.

The RAS registration fees for participants are as follows:

	Professional AAS Members (*)	Professional	Postgraduate student (**)	Undergraduate student (**)	Accompanist
Inscripción temprana Hasta el 05/03/2020	USD 80	USD 100	USD 50	USD 35	USD 50
Inscripción tardía Hasta el 20/04/2020	USD 95	USD 120	USD 65	USD 40	USD 50
Inscripción durante el evento	USD 115	USD 140	USD 75	USD 50	USD 50

(*) The AAS members who don't have debts could apply for the promoted price.

(**) The undergraduate and postgraduate students should present their student documentation.

IAS Travel Grants

The International Association of Sedimentologists (IAS) has decided to assign travel grants for selected IAS student members to attend to the meeting. The grants will allow students to cover partially the expenses of meeting registration, accommodation, transportation, etc.

IAS student members (postgraduate and undergraduate) may apply grants through the IAS website: <http://www.sedimentologists.org/> up to the 10th March 2020. The application procedure consists on submitting a brief motivation letter, detailing location and distance of the travel, filiation, etc. The applicants should have an accepted presentation (oral or poster) in the XVII RAS and a IAS member.

Requests for information to become an IAS member:

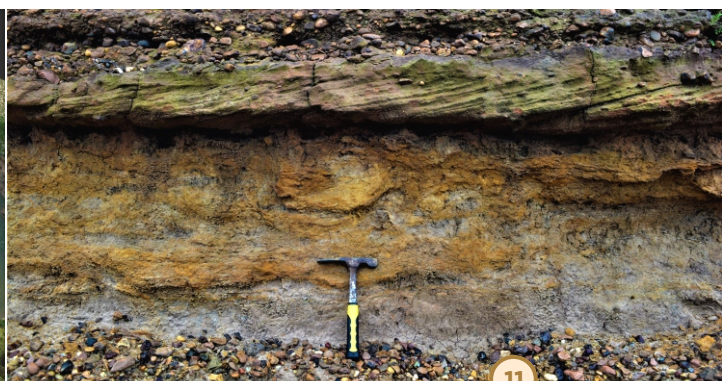
www.sedimentologists.org

Post-meeting fieldtrips

Two post-meeting field trips are simultaneously scheduled to June 11th 2020, one of them will be a terrestrial trip and the other a navigation trip through the Paraná river. The terrestrial field trip will allow participants to visit and observe representative outcrops, marine and transitional environments from the Late Miocene, Late Miocene continental sediments, large regional wetlands from the Pliocene-Early Pleistocene, fluvial sequences correlated to rising cycles and high-stand see levels over interglacial stages and loess sequences representative of the glacial periods.

The second field trip will consist of a navigation through the Paraná river, a unique opportunity to observe and discuss over different geomorphological elements and typical sedimentation macroforms of one of the world's largest anabranching-type fluvial systems.

Due to logistic limitations, **those activities will have a limited capacity of participants and financed with a registration payment from the interested participants.** The organizers recommend taking out an insurance service. Detailed information of those trips will be offered in the Third Circular.



Sponsorship opportunities

Our sponsors play a vital role in supporting this meeting and ensuring its success, while increasing their exposure and visibility among the participants of the event.

Those interested to become a sponsor of the XVII RAS Meeting, please contact:

xviiras2020@gmail.com

Technical and commercial exhibits

Companies providing geological services, equipment and instruments are invited to exhibit during the RAS Meeting. Those interested can request further information at

xviiras2020@gmail.com

Contact

The XVII RAS Meeting official email address is: xviiras2020@gmail.com

News and meeting information are available in the AAS webpage:

www.sedimentologia.org.ar/spa/xvii-ras

The secretary is available for any inquiries and questions regarding the event.

Follow us!



www.facebook.com/xviiras2020



www.instagram.com/xviiras2020



www.twitter.com/xviiras2020

Sponsors



YPF



C I C Y T T P



UNL • FACULTAD
DE INGENIERÍA Y
CIENCIAS HÍDRICAS